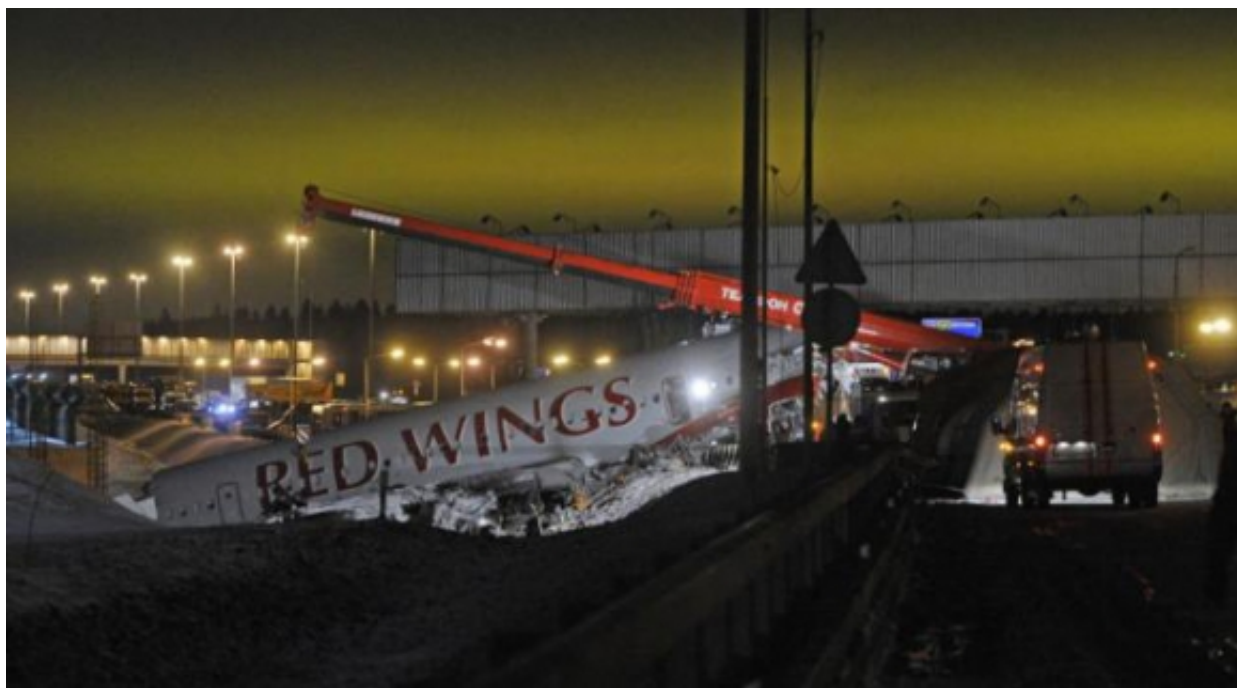

Progress of investigation of a criminal case over Tu-204 crash at Vnukovo airport



Investigating bodies of the Moscow Interregional Transport Investigations Directorate of the Russia's Investigative Committee continue investigating a criminal case over crash of Red Wings Tu-204 RA-64047 plane (part 3 of article 263 of the RF Criminal Code).

According to investigators Red Wings Tu-204 made an emergency landing at the Vnukovo airport. There were 8 crew members aboard, including staff of the airlines. 4 of them were killed in the crash and later one more stewardess died of bad injuries at the hospital.

Though a number of media report that the causes have been found, investigators believe that it is too early to make final conclusions. After the Interstate Aviation Committee finishes their investigation, the Investigative Committee will run a comprehensive expert examination involving specialists, who participated in development, flight tests and put into operation this kind of aircraft.

At present investigators are evaluating timeliness, sufficiency and efficiency of control over the aircraft operator, sufficiency of measures ensuring flight safety at this kind of aircraft by officials of

authorized executive bodies, namely Transport Ministry of Russia, whatever their official position. For this officials are going to be questioned in the near future, including those of the Transport Ministry, who were in charge of control over insuring Tu-204 flight safety. At the same time they are checking sufficiency, timeliness of implementation and observance of necessary maintenance regulations by the Red Wing airlines.

In addition to finding technical causes, investigators believe it necessary to find out adequacy of measures, taken after the crash, namely how valid was it that the decision to suspend this kind of aircraft from flying or revoke the flight operator's license was not made.

Investigation is to be continued.

31 January 2013

Page address: <https://en.sledcom.ru/news/item/512878>